

The position of species and the reconstruction of phylogeny trees of Tahuna nutmeg based on the *rbcL* gene DNA chloroplast

by Elne Vieke Rambli

Submission date: 02-May-2023 02:39PM (UTC+0700)

Submission ID: 2081856794

File name: The_position_of_Spesis_ang_the_reconstruction.pdf (295.07K)

Word count: 2884

Character count: 15136



The position of species and the reconstruction of phylogeny trees of Tahuna nutmeg based on the *rbcl* gene DNA chloroplast

¹ Fanny Nella Nanlohy, ² Mokosuli Yermia Semuel, ³ Aser Yalindua, ⁴ Elne Vieke Rambli

^{1,2,3} Department of Biology, Faculty Mathematics and Science, State University of Manado, Kampus UNIMA di Tondano, Sulawesi Utara, Indonesia

² Laboratory of Molecular Biology, Faculty Mathematics and Science, State University of Manado, Kampus UNIMA di Tondano, Sulawesi Utara, Indonesia

³ Health Polytechnic, Ministry of Health Republic of Indonesia, Manado, Sulawesi Utara, Indonesia

Abstract

Nutmeg (*Myristica* sp.) is a plant originating from the Banda archipelago, Maluku, Indonesia. Nutmeg species and diversity of varieties could be assessed by observing morphological and phenotypic variabilities in the field. Secondary metabolites of this plant have a high value because of their benefits for the health, food, and pharmacy industries. The objectives of this research were to obtain position of species and phylogeny trees of Tahuna nutmeg based on *rbcl* gene DNA chloroplast. Universal *rbcl* primer pairs were used to amplify 591 bp DNA fragment. BLAST search from NCBI site showed that Tahuna nutmeg has 99% identity with *Mauloutchia chapelieri*, *Horsfieldia amygdalina*, *Staudtia kamerunensis*, *Virola michelii*, *Virola kwatae* and *Myristica fragrans*. It can be inferred from this study that partial of *rbcl* gene cannot be used to differentiate species in *Myristica*; it can only be used to differentiate the genus level within family Myristicaceae.

Keywords: *rbcl* gene, tahuna nutmeg, DNA barcode, myristica

1. Introduction

Nutmeg (*Myristica* sp.) is native to Indonesia. The genus *Myristica* by many experts is considered as native plants of Indonesia (Soeroso, 2012) [12]. Nutmeg plants originated from the Banda Islands, Maluku (De Guzman and Siemonsma, 1999; Sasikumar *et al.* 1999; Soeroso, 2012) [2, 11, 12]. Nutmeg has ecological and etnomedical significances (Steeves, 2011; Tallei and Kolondam, 2015) [13, 15], and is amongst older group within angiospermae division, which consists of recently evolved species (Newmaster & agupathy, 2009; Tallei and Kolondam, 2015) [9, 10, 15]. Characterization based on morphological markers of species from nutmeg family is difficult considering the similarity of their leaves, so identification relies heavily on the characteristics of small flowers (1-4 mm in size), which can only be obtained when the plant is mature sufficiently (Newmaster & Ragupathy 2009; Soeroso, 2012) [9, 10, 12].

Based on conventional identification, nutmeg plants in Indonesia consist of several sub species. Nutmeg ternate (*Myristica succadewa* BL), Forest Nutmeg or also called Bacan Nutmeg (*Myristica speciosa* Warb), Nutmeg Gosoriwonin or Nutmeg Onin (*Myristica schefferi* Warb), Nutmeg of Papua (*Myristica argantea* Warb), Nutmeg of Burung (*Myristica sylvetris* Houtt) and Nutmeg of Banda (*Myristica fragrans* Houtt) (Juwahir, 2015) [5]. However, information on plant diversity and types of nutmeg varieties in Indonesia is still very limited. Nutmeg plant research originating from North Sulawesi is underestimated. Meanwhile, Tahuna nutmeg has high quality and special

economic value in the trade of International today (Soeroso, 2012) [12]. The genetic diversity of nutmeg plants is well known, for the conservation and protection of indigenous biodiversity of Indonesia. The conservation of nutmeg germplasm is also needed to prevent genetic erosion due to human actions at nutmeg growing sites.

The most widely used plant identification today is the DNA barcoding method. DNA barcoding is identified using a molecular approach based on short DNA fragments (Hebert *et al.*, 2003) [4]. An organism can be identified and differentiated by barcode DNA from species stage to subspecies (Lahaye *et al.* 2008) [7]. The advantage of this technique is to identify and characterize a variety of species that can not be distinguished morphologically (Tudge, 2000) [14]. In addition, this technique is also used to identify an organism even though the DNA of the organism is not in whole or pure form, even its DNA has been degraded (Hajibabaei *et al.* 2006) [3]. In animals, the DNA of the mitochondria is used as the basis for the preparation of the DNA barcode, whereas in plants due to the relatively small number and variation of the mitochondrial sequence, the DNA plastids (chloroplasts) are used as the material for making DNA barcodes (Hebert *et al.*, 2003; Mokosuli *et al.* 2016) [4].

The use of two plastid genes of *rbcl* and *matK* is recommended by The Consortium for the Barcode of Life (CBOL) as the standard barcode for plants and COI gene for animals (Hollingsworth *et al.* 2009). However, a group of researcher at the CBOL recommends two loci combination, *rbcl* and *matK*, as standard DNA barcode for plants (Steeves,

2011)^[13]. These two regions in chloroplast DNA were chosen because of having high degree of differentiation between species (Bafeel *et al.* 2011). Furthermore, these two genes play important role in phylogenetic reconstruction for land plants (Kuzmina *et al.* 2012). The *rbcl* and *matk* genes have been used as DNA markers for plant species (Hebert *et al.* 2003; Hajibabaei *et al.* 2006)^[4, 3] Compared with the chromosomal genes (chromosomal genes), chloroplast DNA has a 1-10x faster evolution rate (Avisa *et al.* 1987)^[11]. Research aimed at obtaining species status and reconstructing the phylogenetic trees of nutmeg plant originating from Tahuna North Sulawesi.

2. Materials and Method

Samples

The nutmeg samples came from two locations in Tahuna namely: Mahena (MHNH) and Kulur (KLRB) (Figure 1). Fresh leaf and fruit samples were determined in the Laboratory of Biology, Faculty Mathematics and Science, State University of Manado, before being used for DNA analysis.



Fig 1: Leaf and Fruit of Tahuna Nutmeg.

DNA Extraction and Purification

Frozen leaf of Tahuna nutmeg was extracted using Geneid DNA Mini Kit Plant according to the protocol given by the company. Fifty mg of fresh leaf was cut into small pieces and freeze with liquid nitrogen and grind to fine powder. Sample placed in a 1.5 mL Eppendorf tube. Into the tube, 400 μ L Lysis Solution GP1 Buffer and 20 μ L Proteinase K were added. The tube was vortexed vigorously for 5 seconds and incubated at 50 oC for 30 min. Tube was centrifuged at 12,000 rpm for 1 min and supernatant was transferred into new 1.5 mL tube. Into the supernatant, 200 μ L Binding Solution W1 was added to lyse the sample then vortexed. Sample was applied to Spin Filter located in a 2.0 mL Receiver Tube and centrifuged at 12,000 rpm for 1 min. Into the Spin Filter, 400 μ L Washing Solution was added and centrifuged at 12,000 rpm for 30 sec. Receiver Tube with filtrate in it was discarded and Spin Filter was placed in a new Receiver Tube. Into the Spin Filter, 750 μ L Washing Solution W1 was added and the tube was centrifuged at 12,000rpm for 30 sec. The Receiver Tube containing filter was discarded and Spin Filter was again placed in a new Receiver Tube. The tube was centrifuged for

maximum speed for 2 min to remove all traces of ethanol. The Receiver Tube was discarded. The Spin Filter was added to Elution Tube and 100 μ L of Elution Buffer was added. The tube was incubated for 1 min at room temperature and centrifuged at 8,000 rpm for 1 min. The eluted DNA was used for DNA amplification

DNA Amplification

Primers used for DNA amplification of *matK* gene were *rbcl*LaF (5'-ATG TCA CCA CAA ACA GAG ACT AAA GC-3') and *rbcl*LaR (5'-GTA AAA TCA AGT CCA CCR CG-3') (Kress and Erickson, 2007). DNA was amplified using 5x Firepol PCR Master Mix Ready-to-Load (Solis BioDyne). Total volume for amplification was 40 μ L consisted of 2 μ L DNA sample and 1.5 μ L of each primer (10 mM). DNA amplification was carried out in Rotorgene Cyclor (Qiagen) as follows: predenaturation at 95oC for 4 min followed by 35 cycles of denaturation at 95oC for 30 sec, annealing at 50 oC for 40 sec, elongation at 72 oC for 50 sec, and one cycle of final extension at 72 oC for 2 min. The PCR products were separated by 1.0% agarose gel electrophoresis. Amplicon was bidirectionally sequenced at First BASE (Singapore).

3. Data Analysis

Sequence chromatogram was edited using Geneious 6.1.6 (Biomatters Ltd., Auckland, New Zealand) and assembled into bidirectional contig. The *rbcl* gene sequence was employed in Basic Local Alignment Search Tool (BLAST) (<http://blast.ncbi.nlm.nih.gov/Blast.cgi>) to query for highly similar sequence. Correct identification means identity percentage of BLAST is the highest searched sequences derived from expected species, or species from expected genus. In contrary, ambiguous identification means identity percentage of BLAST is the highest of the searched sequence derived not from expected species or genus, or family. A final alignment for *matK* sequences was generated using Multalin V.5.4.1 developed by Corpet (1988) (<http://multalin.toulouse.inra.fr/multalin/>). Sequences were trimmed at both ends of the alignment to avoid many missing data at the end of the sequences so the final characters were 707 sequences. Phylogenetic tree was constructed using software MEGA 6.0.

4. Results and Discussion

4.1 Results

Total DNA extract from leaves of Nutmeg plant successfully done. The DNA purity of Mahena samples and Kulur samples are in the optimal purity range of 1.7-2.0. Furthermore, the total DNA concentration is also at the optimum concentration for DNA template amplification of *rbcl* gene (Table 1).

Table 1: The concentration and purity of total leaf DNA of Nutmeg

No.	Origin of sample	Concentration (μ g/ml)	Purity (A_{260}/A_{280})
1	Mahena (MHNH)	24,50	1,86
2	Kulur (KLRB)	22,18	1,68

Fragments of *rbcl* gene that were successfully amplified, were visualized with electrophoresis using 0.8% agarose gel. The *rbcl* genes of the Kulur sample were visualized at 571 bp while the Mahena samples were 573 bp long (Fig. 2).

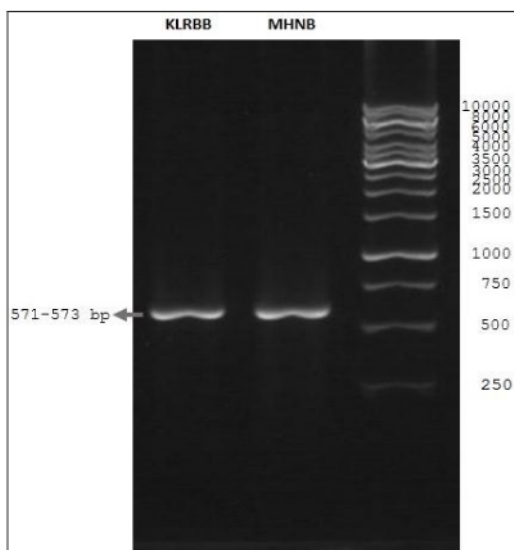


Fig 2: Agarose gel of amplified partial *rbcL* gene (571-573 bp) of Tahuna nutmeg (KLRB and MHNB) and 1 kb marker.

The sequencing process of sample, yielding a high quality chromatogram (HQ), where the HQ value of KLRB is 89.2% and MHNB: 90.2%. Both KLRB and MHNB samples showed the highest composition of timin (28.3% and 28%, respectively). Samples of KLRB have a percentage of A-T (55%) and G-C (45%), while MHNB samples have an AT percentage (54.6%) and GC (45.4%) (Table 1).

Table 2: Nucleotide Composition of *rbcL* gene of Tahuna Nutmeg

Nucleotide	KLRB (Kultur)	MHNB (Mahena)
Adenin	26,7%	26,6%
Timin	28,3%	28,0%
Sitosin	21,6%	21,7%
Guanin	23,4%	23,6%

The alignment analysis results, on the NCBI website, obtained 100 data sequences of identical *rbcL* gene, which have been recorded on Gen Bank NCBI. Of the 100 sequences, 20 sequences of *rbcL* gene were obtained with the highest identical level (www.ncbi.nih.gov) with the *rbcL* gene of Tahuna nutmeg (Table 2).

Table 3: Twenty Similarity Sequens of BLAST Results of Tahuna Nutmeg

Species	Query cover	E value	% Identic	Accession Number
<i>Mauloutchia chapelierii</i>	97%	0.0	99%	AF197594.1
<i>Horsfieldia amygdalina</i> isolate G216	97%	0.0	99%	KR529437.1
<i>Staudtia kamerunensis</i> voucher PM4941	97%	0.0	99%	KC628429.1
<i>Staudtia kamerunensis</i> voucher PM5269	97%	0.0	99%	KC628405.1
<i>Virola michelii</i> voucher NL1 10149	97%	0.0	99%	FJ038132.1
<i>Virola michelii</i> voucher NL1 10074	97%	0.0	99%	FJ038130.1
<i>Virola kwatae</i> voucher NL1 10070	97%	0.0	99%	FJ038129.1
<i>Myristica fragrans</i>	97%	0.0	99%	AY298839.1
<i>Knema latericia</i>	97%	0.0	99%	L12653.2
<i>Myristica fragrans</i>	97%	0.0	99%	AF206798.1
<i>Knema tenuinervia</i> isolate J616	97%	0.0	99%	KR529477.1
<i>Knema globularia</i> isolate J385	97%	0.0	99%	KR529464.1
<i>Myristica cf. sepicana</i> GW2419	97%	0.0	99%	FJ976152.1
<i>Componeura atopa</i> isolate 1374	97%	0.0	99%	EU090508.1
<i>Componeura capitellata</i> isolate 835	97%	0.0	99%	EU090509.1
<i>Virola sebifera</i> isolate 779	97%	0.0	99%	EU090543.1
<i>Coelocaryon preussii</i>	97%	0.0	99%	AY743437.1
<i>Horsfieldia amygdalina</i> isolate G111	95%	0.0	99%	KR529436.1
<i>Componeura ulei</i> isolate 6192	97%	0.0	99%	EU090541.1
<i>Componeura mutisii</i> isolate 914	97%	0.0	99%	EU090532.1

4.2 Discussion

The use of nutmeg leaf samples for DNA extraction, showed good concentration and purity. This is evidenced by the successful amplification of *rbcL* genes, both in KLRB and MHNB samples. Amplification also proceeds well, evidenced by the results of sequencing with chromatograms, which have high HG. The result of aligning the rough sequences of the nutmeg genes from Tahuna by the BLAST method on the NCBI site, yields a sequence of 99% identical levels with *Mauloutchia chapelierii* [AF197594.1]. However, the sequences of the *rbcL* gene from the Tahuna also have identical with 19 other sequences, with the same percentage identical (99%) (Table 3). Thus, the *rbcL* gene sequence has not been

able to separate the grouping of Nutmeg Tahuna, at the species level.

Reconstruction of phylogeny based on *rbcL* gene, placing samples of KLRB and MHNB having the closest kinship relation with *Mauloutchia chapelierii* [AF197594.1]. The results of phylogeny reconstruction also show that Nutmeg from Tahuna has genus-level kinship with *Horsfieldia amygdalina*, *Staudtia kamerunensis*, *Virola michelii*, *Virola kwatae*, *Myristica fragrans*, *Componeura atopa*, *Componeura capitellata*, *Virola sebifera*, *Horsfieldia amygdalina*, *Coelocaryon preussii*, *Componeura ulei*, *Componeura mutisii*, *Knema tenuinervia*, *Myristica cf. Sepicana* (Figure 3).

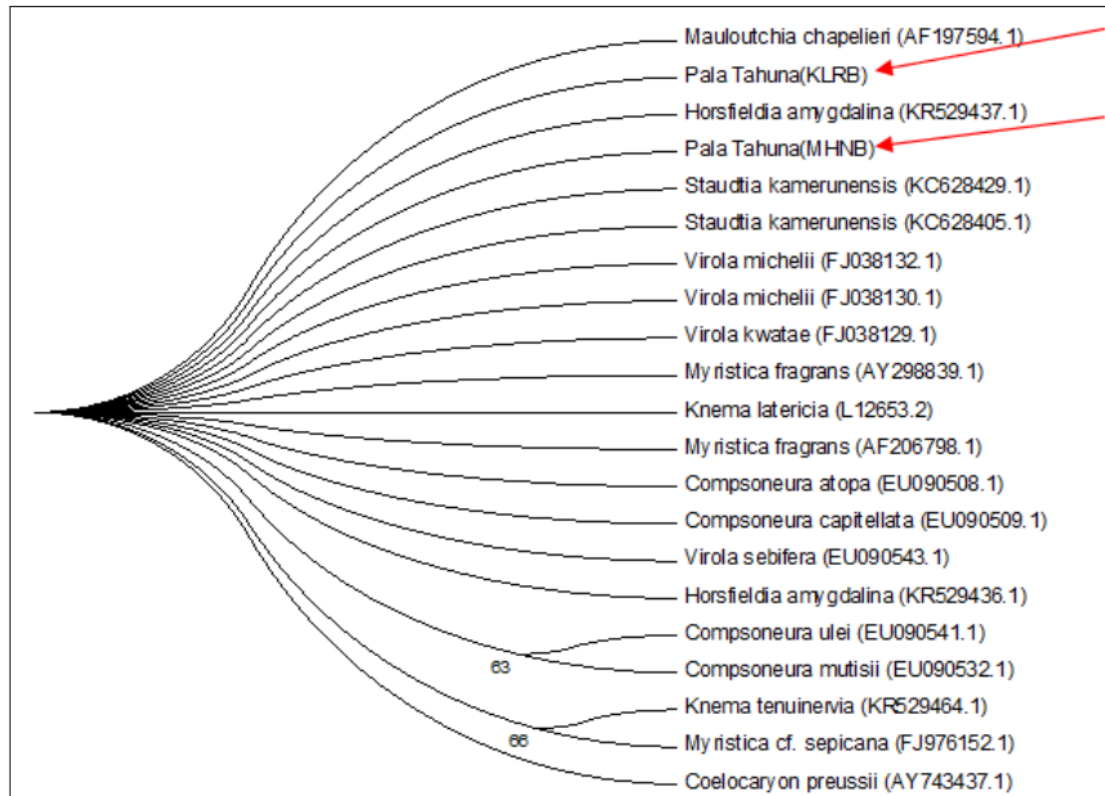


Fig 2: Reconstruction of Phylogeny Tree of Tahuna Nutmeg Based *rbcL* gene.

The results of this study indicate that the ability of *rbcL* gene discrimination, as a barcode in the Tahuna nutmeg, belongs to the weak category. The *rbcL* gene can only distinguish the genus level, and not the species level. The use of partial *rbcL* gene of chloroplast DNA, has not been able to distinguish the position of the species of Tahuna Nutmeg. Research carried out by Tallei and Kolondam, on Sanger Nutmeg using partial *matK* gene of chloroplast DNA, also can not distinguish the position of Sanger nutmeg plant in the genus *Myristicaceae* (Tallei and Kolondam, 2014). Partial *rbcL* gene also can not distinguish the position of endemic plant species from Minahasa, *Syzygium sp* (Walean, 2014); and *Phalus tancarvillae* plants (Kolondam *et al.*, 2012).

5. Conclusion

Partial *rbcL* gene of DNA chloroplasts, can not distinguish Tahuna Nutmeg at the species level. *rbcL* gene can only be used to differentiate the genus level within *Myristicaceae* family.

6. Acknowledgment

Thank you to the Ministry of Research, Technology and Higher Education, Republic of Indonesia who has funded this research through Applied Product Grants Scheme. Thank you also to the Laboratory of Molecular Biology FMIPA Manado State University.

7. References

1. Avise JC, Arnol J, Ball RM, Bermingham E, Lemb E, Neigel JE, *et al.* Reeb CA, Sauder CA. Intraspecific phylogeography: The mitochondrial DNA bridge between population genetics and systematic. *Ann Rev Ecol Syst* 1987; 18:89-52.
2. De Guzman, CC, JS Siemonsma. Plant Resources of South East Asia No. *Spices*. PROSEA. 1999; 13:400.
3. Hajibabaei M. A minimalist barcode can identify a specimen whose DNA is degraded. *J Compilation Blackwell Publishing*. 2006; 6:959-964.
4. Hebert PDN, Cywinska NA, Ball SL dan de Waard, JR. Biological identifications through DNA barcodes. *Proc. Roy. Soc. B-Biol. Sci.* 2003; 270:313-321.
5. Juwahir. *Ciri-ciri dan Habitat Buah Nutmeg*. <http://www.bibitnutmeg.com/2015/12/ciri-ciri-dan-habitat-buah-nutmeg.html>. 2015.
6. Kearse M, Moir R, Wilson A, Stones-Havas S, Cheung M, Sturrock S. *et al.* Geneious Basic: an integrated and extendable desktop software platform for the organization and analysis of sequence data. *Bioinformatics*. doi: 10.1093/bioinformatics/bts199 [PMC free article] [PubMed]. 2012; 28:1647-1649.
7. Lahaye R, Van der Bank M, Bogarin D, Warner J, Pupulin F, Gigot G, *et al.* Maurin O, Duthoid S, Barraclough TG,

- Savolainen V. DNA *barcode* the floras of biodiversity hotspots. Proc. Nat. Acad. Sci., 2008; 105(8):2923-2928.
8. Nagja Tripathi, Vimal K, Sanjeev A. *Myristica Fragrans: A Comprehensive Review*. International Journal Of Pharmacy and Pharmaceutical Sciences. 2015; 8 ISSN:0975-1491.
 9. Newmaster SG, Ragupathy S. Testing plant barcoding in a sister species complex of pantropical *Acacia* Mimosoideae, Fabaceae. *Molecular Ecology Resources* [http:// doi: 10.1111/j.1755-0998.2009.02642.x](http://doi:10.1111/j.1755-0998.2009.02642.x). 2009; 9:172-180.
 10. Ragupathy S, Newmaster SG, Murugesan M, Balasubramanian V. DNA barcoding discriminates a new cryptic grass species revealed in an ethnobotany study by the hilltribes of the Western Ghats in southern India. *Molecular Ecology Resources* [http:// doi: 10.1111/j.1755-0998.2009.02641.x](http://doi:10.1111/j.1755-0998.2009.02641.x). 2009; 9:164-171.
 11. Sasikumar B, Krishnamoorthy B, Johnson KG, Saji KV, Ravindran PN, Peter KV. *Et al.* Biodiversity and conservation of major spices in India. Plant Genet. Resour. Newslet. 1999; 118:19-26.
 12. Soeroso SRD. Nutmeg *Myristica* spp. Maluku Utara Berdasarkan Keragaman Morfologi, Kandungan Atsiri, Pendugaan Seks Tanaman Dan Analisis Marka SSR. Disertasi. Sekolah pascasarjana, Institut Pertanian Bogor, Indonesia. 2012.
 13. Steeves RAD. An intrageneric and intraspecific study of morphological and genetic variation in the neotropical *Compsoeura* and *Virola* Myristicaceae Thesis. Canada: The University of Guelph. 2011.
 14. Tudge C. The Variety of Life. New York: Oxford University Press. 2000.
 15. Tallei TE, Kolondam BJ. DNA Barcoding of Sangihe Nutmeg *Myristica fragrans* using *matK* Gene. Hayati Journal of Bioscience. DOI: 10.4308/hjb.22.1.41. 2015; 22(1):41-47.

The position of species and the reconstruction of phylogeny trees of Tahuna nutmeg based on the rbcL gene DNA chloroplast

ORIGINALITY REPORT

11 %

SIMILARITY INDEX

4 %

INTERNET SOURCES

5 %

PUBLICATIONS

10 %

STUDENT PAPERS

MATCHED SOURCE

1

Submitted to Universitas Negeri Manado

Student Paper

7 %

7%

★ Submitted to Universitas Negeri Manado

Student Paper

Exclude quotes Off

Exclude matches < 1%

Exclude bibliography Off